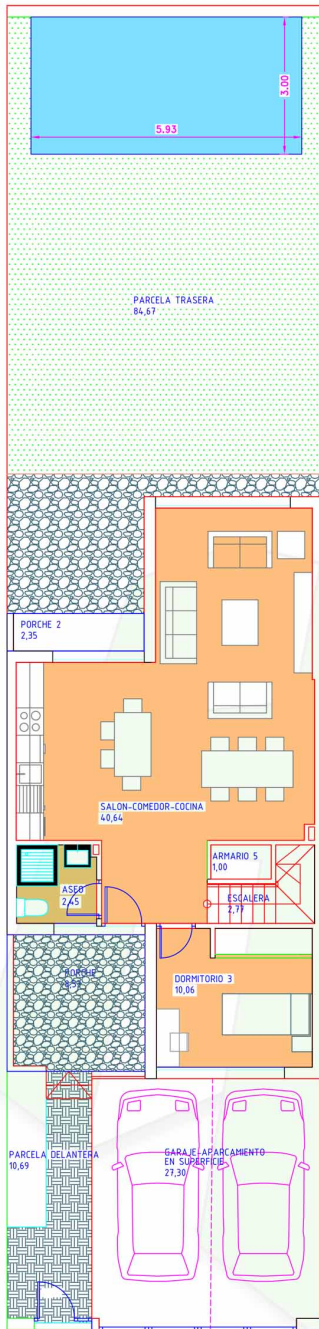
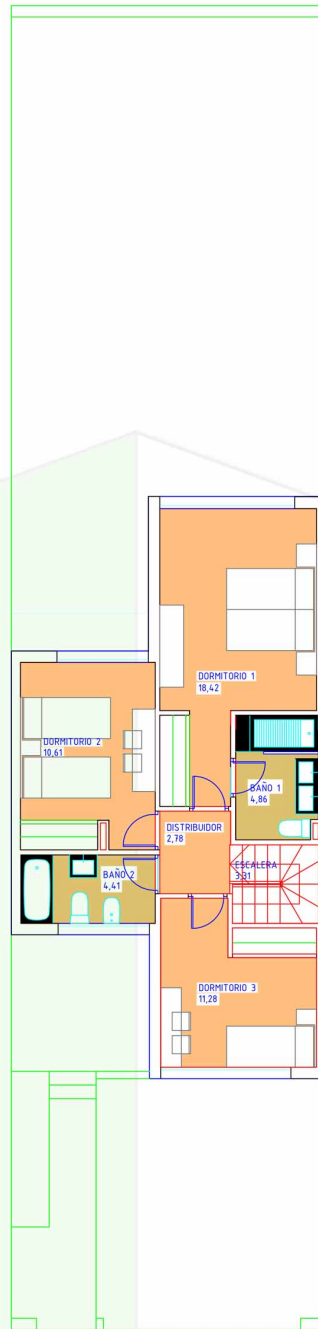




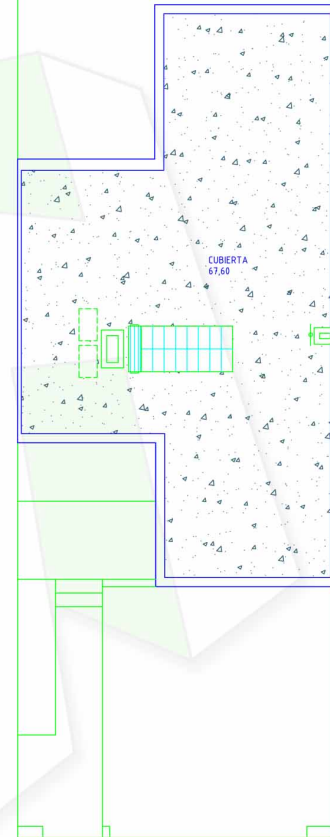
D



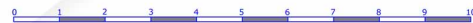
PLANTA BAJA VIV VPPL



PLANTA PRIMERA VIV VPPL



PLANTA CUBIERTA VIV VPPL



SUPERFICIE DE PARCELA TIPO	=200,97 m ²
RESUMEN SUPERFICIES UTILES	
TOTAL SUP. UTIL INTERIOR	=112,14 m ²
TOTAL SUP. UTIL PARCELA LIBRE	= 84,67 m ²
TOTAL SUP. UTIL TERRAZA	= 0,00 m ²
TOTAL SUP. UTIL PORCHES	= 22,01 m ²
TOTAL SUP. UTIL GARAJE	= 27,30 m ²
TOTAL SUP. UTIL	=239,23 m ²
RESUMEN SUPERFICIES CONSTRUIDAS	
TOTAL SUP. CONSTRUIDA VIVIENDA	=137,34 m ²
TOTAL SUP. CONSTRUIDA ENTRADA	= 10,50 m ²
TOTAL SUP. CONSTRUIDA PORCHES	= 22,12 m ²
TOTAL SUP. CONSTRUIDA GARAJE	= 27,91 m ²
TOTAL SUP. CONSTRUIDA	=197,87 m ²