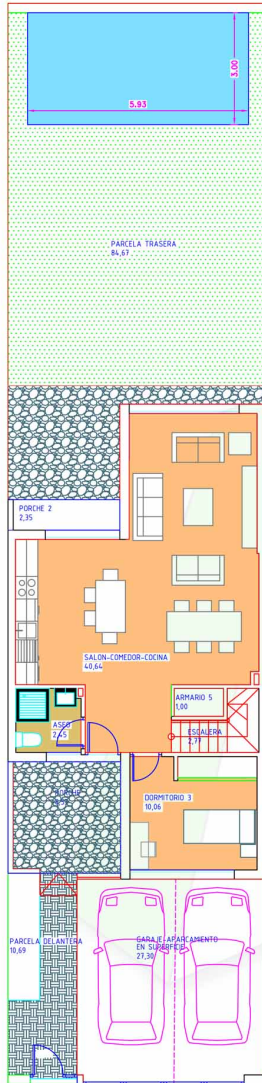
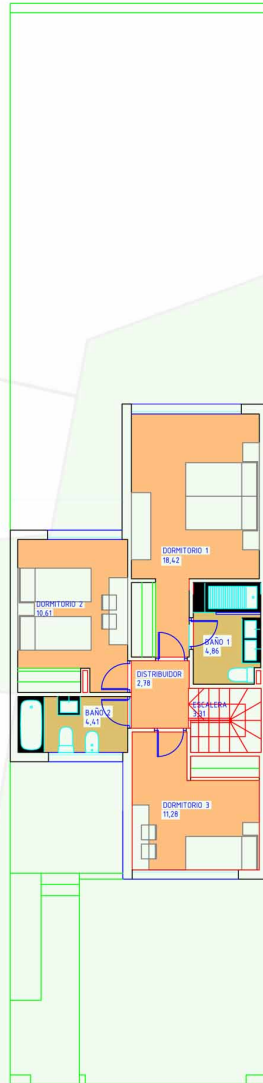




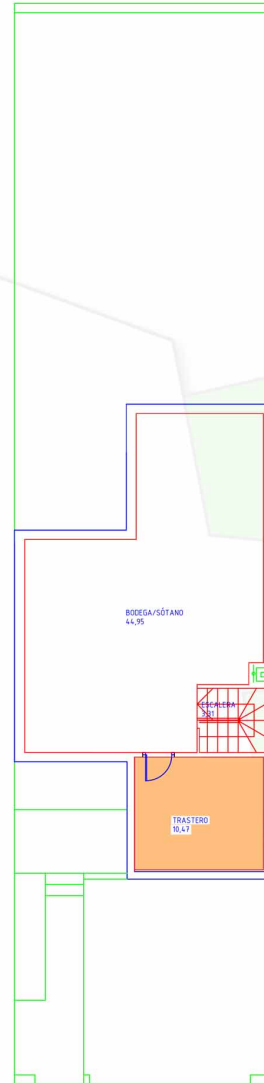
E



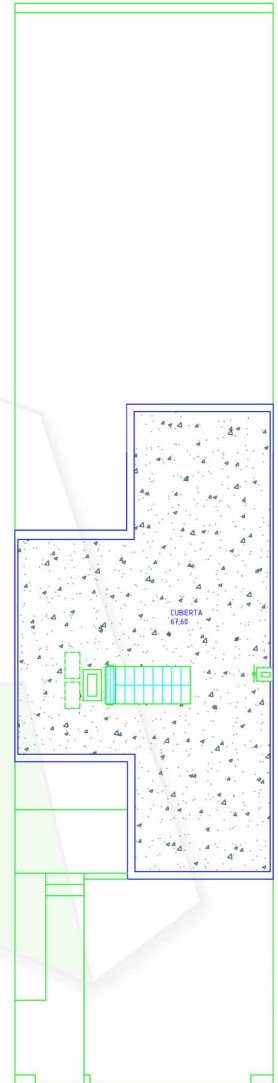
PLANTA BAJA VIV VPPL



PLANTA PRIMERA VIV VPPL



PLANTA SÓTANO VIV VPPL



PLANTA CUBIERTA VIV VPPL



SUPERFICIE DE PARCELA TIPO	=200,97 m ²
RESUMEN SUPERFICIES ÚTILES	
TOTAL SUP. ÚTIL INTERIOR	=171,19 m ²
TOTAL SUP. ÚTIL PARCELA LIBRE	= 24,67 m ²
TOTAL SUP. ÚTIL TERRAZA	= 0,00 m ²
TOTAL SUP. ÚTIL PORCHES	= 22,01 m ²
TOTAL SUP. ÚTIL GARAJE	= 27,30 m ²
TOTAL SUP. ÚTIL	=298,28 m ²
RESUMEN SUPERFICIES CONSTRUIDAS	
TOTAL SUP. CONSTRUIDA VIVIENDA	=205,01 m ²
TOTAL SUP. CONSTRUIDA ENTRADA	= 10,50 m ²
TOTAL SUP. CONSTRUIDA PORCHES	= 22,12 m ²
TOTAL SUP. CONSTRUIDA GARAJE	= 27,91 m ²
TOTAL SUP. CONSTRUIDA	=265,54 m ²